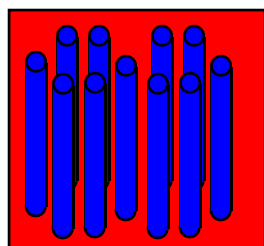
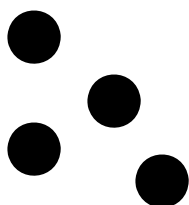


Isotropic objects in anisotropic matrices (surfactant mesophases)



+

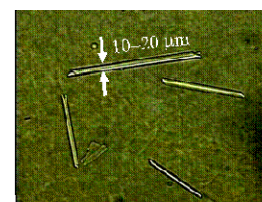


“Object”-Mesophase Composites

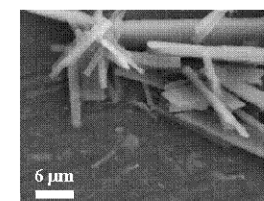
Synthesis of anisotropic (rod-like and sheet-like) soft materials (crosslinked polysiloxanes) in hexagonal and lamellar phases respectively (and also other very odd shapes)

Chem. Mater., **2005**, *17*, 2460

Polymer, **2005**, *46*, 7961

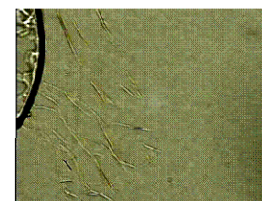


Optical micrographs

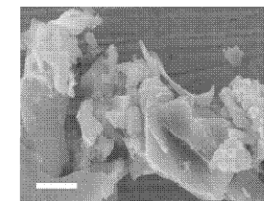


Hexagonal phase

SEM

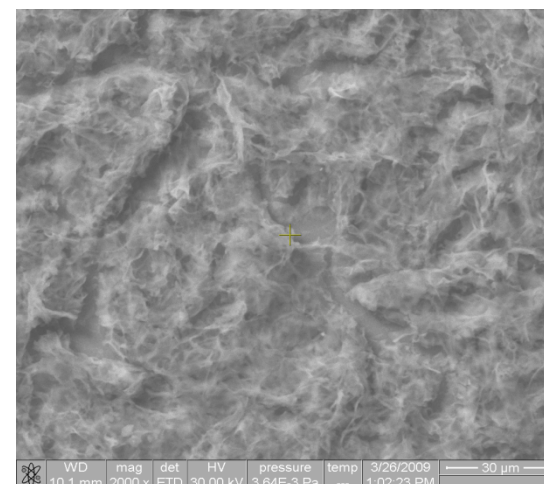


Lamellar phase



Particle-size dependent hybrid morphology depending on size of silica nanoparticle in hexagonal phases. Crosslinked nanoparticulate scaffolds to prepare porous materials with controllable porosity.

J. Phys. Chem. B, **2009**, *113*, 3423



WD 10.1 mm mag 2000 x det ETD HV 30.00 kV pressure 3.64E-3 Pa temp --- 3/26/2009 1:02:23 PM 30 μm